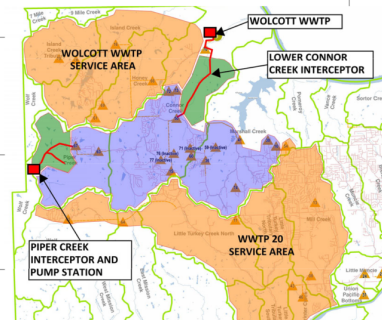


# PROJECT ANNOUNCEMENT

## Wolcott Area Wastewater Upgrades

Project Type: <b>Expansion</b>	<ul style="list-style-type: none"><li>• New wastewater treatment facility – increase from 0.3 MGD to 2 MGD</li><li>• \$36M WWTF, \$14M Lower Connor Creek Interceptor, \$7.5M Piper Creek Interceptor/Pump Station</li></ul>
WYEDC Investors Engaged:	<ul style="list-style-type: none"><li>• Unified Government</li><li>• Continental Consulting Engineers</li><li>• GBA</li></ul>
Drivers:	<ul style="list-style-type: none"><li>• Support future demand</li><li>• Open up capacity</li><li>• General system upgrades</li></ul>



**\$50.2M**  
investment



**WYANDOTTE**  
ECONOMIC DEVELOPMENT COUNCIL